

THE CHILDREN'S HOSPITAL DIRECTORY



 **THE CHILDREN'S HOSPITAL**
AT SAINT PETER'S UNIVERSITY HOSPITAL
A MEMBER OF SAINT PETER'S HEALTHCARE SYSTEM

Treating you better...for life.

Thanks Saint Peter's

Contents:

Leadership	1
Welcome	2
Adolescent Medicine	3
Cardiology	4
Critical Care	5
Developmental and Behavioral Pediatrics	6
Emergency Medicine	7
Endocrinology	10
Gastroenterology	11
General Pediatrics	12
Genetics	15
Hematology/Oncology	16
Immunology and Allergy	18
Infectious Diseases	19
Inpatient Pediatric Medicine	20
Neonatology	21
Nephrology	23
Neurology	24
Pathology	26
Pulmonology	27
Sports Medicine	28
Pediatric Orthopedics	29
Pediatric Surgery	30
Centers of Excellence	31
Community Collaborating Physicians	36
Contact Numbers	38

Leadership



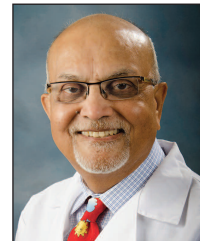
Leslie D. Hirsch, FACHE
President and Chief Executive Officer
Saint Peter's
Healthcare System



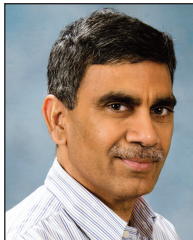
Niranjan Rao, MD
Chief Medical Officer
Saint Peter's
Healthcare System



Linda Carroll, RN
Chief Nursing Officer
Saint Peter's
Healthcare System



Bipin Patel, MD, FAAP
Chairman
Department of Pediatrics
The Children's Hospital



Siva Jonna, MD
Vice Chairman
Department of Pediatrics
The Children's Hospital



William Bernstein, MD
Associate Chairman for
Academic Affairs and Quality
Department of Pediatrics
The Children's Hospital



David R. Jaipersaud
Administrative Director
Department of Pediatrics
The Children's Hospital

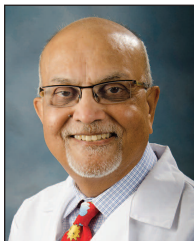
Administration732.565.KIDS (5437)
Service Excellence732.565.5435

Welcome to The Children's Hospital at Saint Peter's University Hospital



Welcome to The Children's Hospital at Saint Peter's University Hospital in New Brunswick, New Jersey. At Saint Peter's, our doctors and staff strive each day to offer the highest quality care to our patients. We understand that when children and their families visit a hospital, it can be confusing and overwhelming. Saint Peter's has placed our patients first and created a family-centered pediatric hospital for all your inpatient and outpatient needs. The doctors and staff at The Children's Hospital are committed to providing the best possible care in a compassionate and comforting environment for children and their families. This directory will give you a comprehensive overview and contact information for the array of services offered at The Children's Hospital. Please also visit us on the web at saintpetershcs.com/spchildrenshospital.

Chairman, Department of Pediatrics



Bipin Patel, MD, FAAP
*Chairman
Department of Pediatrics;
Physician in Chief,
The Children's Hospital at
Saint Peter's University Hospital*

732-565-5448
254 Easton Avenue
New Brunswick, NJ 08901

Chief Residency: Rutgers Medical College, Piscataway, NJ

Residency: Rutgers Medical College, Piscataway, NJ

Medical School: Baroda Medical College, Baroda, India



Adolescent Medicine

The Adolescent Medicine Division at The Children's Hospital offers a comprehensive approach to teenagers' health concerns. The Division specializes in adolescent gynecology, acne and hormonal evaluations, and ADHD in teenagers. We also provide services for obesity and eating disorders. The Division sees patients up to the age of 22.



Susan Brill, MD
*Chief, Division of
Adolescent Medicine*

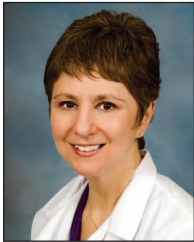
732-565-5487
254 Easton Avenue
New Brunswick, NJ 08901

Residency: North Shore University Hospital, Manhasset, NY
Medical School: Albert Einstein College of Medicine, Bronx, NY

Pediatric Cardiology



At the Children's Hospital of Philadelphia Cardiac Center at Saint Peter's Children's Hospital, board-certified pediatric cardiologists, a nurse clinician and cardiac technologists offer comprehensive services for infants, children and young adults with all forms of acquired and congenital heart disease as well as electrical disorders of the heart. Conditions treated include heart murmurs, congestive heart failure, rheumatic fever, Kawasaki disease and arrhythmias. In addition, we perform fetal echocardiograms looking for possible congenital heart disease prior to birth.



Cheryl Kurer, MD
*Chief, Division of
Pediatric Cardiology*

732-846-2855
254 Easton Avenue
New Brunswick, NJ 08901

Fellowship: The Children's Hospital of Philadelphia, Philadelphia, PA
Residency: Mt. Sinai Hospital, New York, NY
Medical School: Mt. Sinai School of Medicine, New York, NY



Michele Cohen, DO
Pediatric Cardiology

732-846-2855
254 Easton Avenue
New Brunswick, NJ 08901

Fellowship: Schneider Children's Hospital North Shore-Long Island Jewish Hospital, New Hyde Park, NY
Residency: Schneider Children's Hospital North Shore-Long Island Jewish Hospital, Manhasset, NY
Medical School: New York College of Osteopathic Medicine, Glen Head, NY



Sumekala Nadaraj, MD
Pediatric Cardiology

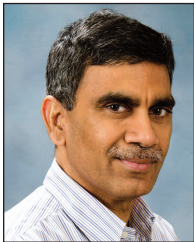
732-846-2855
254 Easton Avenue
New Brunswick, NJ 08901

Fellowship: North Shore-Long Island Jewish Health System, New Hyde Park, NY
Residency: Saint Vincent's Medical Center, Staten Island, NY
Medical School: Coimbatore Medical College & Hospital, Coimbatore, Tamil Nadu, India



Pediatric Critical Care

At The Children's Hospital, we know children are very special people and we have built our reputation on providing the very best care to kids. Saint Peter's eight-bed Pediatric Intensive Care Unit (PICU) gives children who are recovering from surgery or serious illness the highest level of medical care available. This special unit is staffed by pediatric intensivists and nurses who are highly trained in pediatric intensive care medicine. Together, the staff delivers excellence in bedside care and personal attention to every child who arrives at our PICU.



Siva Jonna, MD
*Vice Chairman, Department of Pediatrics
Chief, Division of Pediatric Critical Care*

732-745-6684
254 Easton Avenue
New Brunswick, NJ 08901

Fellowship: Georgetown University Medical Center, Washington, DC
Residency: Howard University Hospital, Washington, DC
Medical School: Sri Venkateswara Medical College, Tirupati, India



Christoph Ohngemach, MD
Pediatric Critical Care

732-745-6684
254 Easton Avenue
New Brunswick, NJ 08901

Fellowship: University of North Carolina School of Medicine, Chapel Hill, NC
Chief Residency: Maine Medical Center, Portland, ME
Residency: Maine Medical Center, Portland, ME
Medical School: Medical School of Ludwig-Maximilians University, Munich, Germany



Bhavani Chalikonda, MD
Pediatric Critical Care

732-745-6684
254 Easton Avenue
New Brunswick, NJ 08901

Fellowship: Lutheran General Children's Hospital, Park Ridge, IL
Residency: Lutheran General Children's Hospital, Park Ridge, IL
Medical School: Rangaraya Medical College, Kakinada, India



Tiong Thé, MD
Pediatric Critical Care

732-745-6684
254 Easton Avenue
New Brunswick, NJ 08901

Fellowship: Jackson Memorial Hospital, University of Miami Medical Center, Miami, FL
Chief Resident: Howard University Hospital, District of Columbia General Hospital, Washington, DC
Residency: Howard University Hospital, District of Columbia General Hospital, Washington, DC
Medical School: University of the West Indies, Mona, Kingston, Jamaica

Developmental and Behavioral Pediatrics



The Developmental and Behavioral Pediatrics Division works in a collaborative setting utilizing a full range of clinicians including pediatric sub-specialists, mental health professionals, social workers, nutritionists, and therapists specializing in speech-language, audiology and rehabilitation. The Division provides diagnostic, medical and therapeutic services to children and young adults up to age 21 with developmental and/or behavioral disturbances and those at risk for such disturbances. The Division also works closely with community agencies and local school districts and provides advocacy to families in need of accommodations and services.



Rose Mary Merola, MD

Chief, Division of Developmental and Behavioral Pediatrics

732-339-7045

254 Easton Avenue
New Brunswick, NJ 08901

Fellowship: Children's Specialized Hospital, Mountainside, NJ
Residency: The Brookdale Hospital Medical Center, Brooklyn, NY
Medical School: Universidad Central del Este, San Pedro de Macoris, Dominican Republic



Meenal Mehta, APN

Division of Developmental and Behavioral Pediatrics

732-339-7045

254 Easton Avenue
New Brunswick, NJ 08901

Master of Science in Nursing: Neonatal Nurse Practitioner, Columbia University School of Nursing, Columbia, NY
Bachelor of Science in Nursing: Ramapo College of New Jersey/UMDNJ, Mahwah, NJ / Newark, NJ



Pediatric Emergency Medicine

Saint Peter's is one of only a few hospitals in New Jersey with a specialized Pediatric Emergency Department, The Dorothy B. Hersh Pediatric Emergency Department (ED). Using the latest technology and equipment developed specifically for treating children, all pediatric emergency patients are stabilized and treated in their own special area. The ED is staffed with physicians and nurses who are specially trained to care for children. The ED has toys, videos and televisions to occupy your child, and the environment is designed to soothe.



Arnaldo Abreu, MD

*Director, Pediatric
Emergency Medicine*

732-937-6009

254 Easton Avenue
New Brunswick, NJ 08901

Fellowship: Elizabeth General Medical Center, Elizabeth, NJ
Residency: Newark Beth Israel Medical Center, Newark, NJ
Medical School: Ross University/School of Medicine, Portsmouth, Dominica



Amy S. Boutsikaris, MD

*Pediatric Emergency
Medicine*

732-937-6009

254 Easton Avenue
New Brunswick, NJ 08901

Fellowship: Inova Children's Hospital, Falls Church, VA
Residency: University of Maryland Hospital for Children, Baltimore, MD
Medical School: University of Medicine and Dentistry of New Jersey (UMDNJ), Newark, NJ



Prashant Chutke, MD

*Pediatric Emergency
Medicine*

732-937-6009

254 Easton Avenue
New Brunswick, NJ 08901

Chief Residency: Children's Hospital of New Jersey, Newark Beth Israel Medical Center, Newark, NJ
Residency: Children's Hospital of New Jersey, Newark Beth Israel Medical Center, Newark, NJ
Medical School: The Institute of Child Health, Grant Medical College & Sir J.J. Group of Hospitals, Mumbai, India
Postgraduate: University of Alabama School of Public Health, Birmingham, AL

Pediatric Emergency Medicine

continued



Ralynne Maitland, DO
*Pediatric Emergency
Medicine*

732-937-6009

254 Easton Avenue
New Brunswick, NJ 08901

Fellowship: University of Connecticut/Connecticut Children's Medical Center, Hartford, CT

Residency: University of Medicine and Dentistry of New Jersey, School of Osteopathic Medicine (UMDNJ-SOM) / Kennedy Health System, Stratford, NJ

Medical School: University of Medicine and Dentistry of New Jersey, School of Osteopathic Medicine, Stratford, NJ



Todd Mastrovitch, MD
*Pediatric Emergency
Medicine*

732-937-6009

254 Easton Avenue
New Brunswick, NJ 08901

Fellowship: St. Joseph's Regional Medical Center/Mount Sinai School of Medicine, Paterson, NJ

Residency: Monmouth Medical Center, Long Branch, NJ

Medical School: St. George's University School of Medicine, Grenada, West Indies



Laurel Kruse, MD
*Pediatric Emergency
Medicine*

732-937-6009

254 Easton Avenue
New Brunswick, NJ 08901

Residency: The Children's Hospital of Philadelphia, Philadelphia, PA

Medical School: UMDNJ, Rutgers Medical School, Piscataway, NJ



Inna Lee, MD
*Pediatric Emergency
Medicine*

732-937-6009

254 Easton Avenue
New Brunswick, NJ 08901

Residency: Newark Beth Israel Medical Center, Newark, NJ

Medical School: Novosibirsk State Medical Institute, Novosibirsk, Russia



Pediatric Emergency Medicine

continued



Manoj Sheth, MD
*Pediatric Emergency
Medicine*

732-937-6009
254 Easton Avenue
New Brunswick, NJ 08901

Residency: Richmond University Medical Center, Staten Island, NY
Medical School: Maharaja Sayajirao University and Medical College,
Vadodara, Gujarat, India



Urvi Thakker, DO
*Pediatric Emergency
Medicine*

732-937-6009
254 Easton Avenue
New Brunswick, NJ 08901

Fellowship: Newark Beth Israel Medical Center, Newark, NJ
Residency: Schneider Children's Hospital, New Hyde Park, NY
Medical School: Nova Southeastern University College of Osteopathic
Medicine, Fort Lauderdale, FL



Madhoolika Verma, MD
*Pediatric Emergency
Medicine*

732-937-6009
254 Easton Avenue
New Brunswick, NJ 08901

Residency: Maimonides Infants and Children's Hospital, Brooklyn, NY
Medical School: King George's Medical University, Lucknow, India

Pediatric Endocrinology



The Pediatric Endocrinology Division offers a full range of endocrine and diabetes care. The Division has state-designation as a Regional Center for Inherited Endocrine Disorders and provides testing, treatment, and education related to congenital hypothyroidism and congenital adrenal hyperplasia (CAH). The Center for Diabetes Self-Management, a comprehensive program for children with diabetes, promotes the concept of self-care through education about the disease, as well as providing the skills necessary for diabetes self-care. In both inpatient and outpatient settings, a team of pediatric nurses, dietitians, and endocrinologists helps children and their families master the necessary information and skills for living day-to-day with diabetes.



Max Salas, MD
*Chief, Division of
Pediatric Endocrinology*

732-745-8574
254 Easton Avenue
New Brunswick, NJ 08901

Fellowship: Children's Hospital of Pittsburgh, PA, and North Shore University Hospital/Cornell University, Manhasset, NY
Residency: England and Children's Hospital Medical Center, Boston, MA, Children's Hospital of Sheffield
Medical School: National University of Mexico, School of Medicine, Mexico City, Mexico



Elizabeth Korn, MD
Pediatric Endocrinology

732-745-8574
254 Easton Avenue
New Brunswick, NJ 08901

Fellowship: Yale University School of Medicine, New Haven, CT
Residency: Yale - New Haven Hospital, Yale University School of Medicine, New Haven, CT
Medical School: University of Pennsylvania, Philadelphia, PA



Weizhen Xu, MD
Pediatric Endocrinology

732-745-8574
254 Easton Avenue
New Brunswick, NJ 08901

Fellowship: Children's Hospital of Philadelphia, Philadelphia, PA
Residency: State University of New York, Buffalo, NY
Medical School: Fudan University (former Shanghai Medical University), Shanghai, China



Pediatric Gastroenterology

The Division of Pediatric Gastroenterology offers a wide array of services to patients. The focus of care is the treatment and prevention of gastrointestinal and nutritional disorders. The Division manages children with complex gastrointestinal and digestive, liver and nutritional problems.



Rupinder Gill, MD, MPH

*Division of Pediatric
Gastroenterology*

732-339-7052

254 Easton Avenue
New Brunswick, NJ 08901

Fellowship: State University of New York Downstate Medical Center at Brooklyn, NY

Residency: Joan C. Edwards School of Medicine at Marshall University, Huntington, WV

Medical School: Joan C. Edwards School of Medicine at Marshall University, Huntington, WV

General Pediatrics



The General Pediatrics Division serves some of the most medically complex and fragile patients in Central Jersey and also offers a full array of pediatric services for children, with more than 18,000 physician and nurse visits annually. The Division is also a leader in the NJ State Vaccine for Children (VFC) program and provides over 26,000 vaccines to children each year. The General Pediatrics Division cares for children with co-morbidities ranging from autism, to the more obscure cases such as highly complex oncology cases and neurological diagnosis. The Pediatric Faculty Group (PFG) is comprised of pediatricians, nurses and technical staff who provide preventive wellness care, nurse visits and urgent care to the central New Jersey catchment area at Saint Peter's Family Health Center. Pediatricians are board certified/board eligible and provide evidence-based care to patients. The site also serves as continuity clinic for pediatric residents, who complete their training in both urgent care and well care. The General Pediatrics Division is also a member of the National Reach Out and Read (ROR) Program and has developed the How Lane Early Literacy Program utilizing the ROR model. Pediatricians and healthcare providers assess developmental milestones and encourage parents to read in both English and Spanish to help foster and nurture reading and learning from infancy through early childhood.



William Bernstein, MD

Associate Chair for Academic Affairs and Quality Chief, Division of General Pediatrics and Pediatric Education, Program Director, Pediatric Residency

732-745-8519

254 Easton Avenue
New Brunswick, NJ 08901

Chief Residency: North Shore University Hospital – Cornell University Medical School, Manhasset, NY

Residency: North Shore University Hospital – Cornell University Medical School, Manhasset, NY

Medical School: Cornell University Medical School, New York, NY



Melissa Fox, MD

Medical Director, Pediatric Faculty Group

732-745-8519

123 How Lane
New Brunswick, NJ 08901

Chief Residency: West Virginia University, Charleston Division, Charleston, West Virginia

Residency: Charleston Area Medical Center, West Virginia University, Charleston Division, Charleston, West Virginia

Medical School: Marshall University, Huntington, West Virginia



Shobha Amara, MD

General Pediatrics

732-745-8519

123 How Lane
New Brunswick, NJ 08901

Residency: Bronx Lebanon Hospital, Albert Einstein College of Medicine, Bronx, NY

Medical School: Gandhi Medical College of Osmania University, Telangana, India



General Pediatrics *continued*



Karen Babcock, MD

General Pediatrics

732-745-8519

123 How Lane
New Brunswick, NJ 08901

Residency: University of Medicine and Dentistry of New Jersey (UMDNJ), Robert Wood Johnson Medical School, New Brunswick, NJ

Medical School: Robert Wood Johnson Medical School, New Brunswick, NJ



Roxanne Kendall, MD

General Pediatrics

732-745-8519

123 How Lane
New Brunswick, NJ 08901

Fellowship: The Children's Hospital of Philadelphia, Philadelphia, PA

Residency: Long Island Jewish Medical Center, New Hyde Park, NY

Medical School: Yale University School of Medicine, New Haven, CT



Samuel Knee, MD

General Pediatrics

732-745-8519

123 How Lane
New Brunswick, NJ 08901

Fellowship: Stony Brook University Hospital, Stony Brook, NY (Sleep Medicine)

Residency: Jacobi Medical Center at the Albert Einstein College of Medicine, Bronx, NY(UMDNJ), Robert Wood Johnson Medical School, New Brunswick, NJ

Medical School: Sackler School of Medicine, New York State Program, Tel Aviv, Israel



Michael Lucas, MD

General Pediatrics

732-745-8519

123 How Lane
New Brunswick, NJ 08901

Chief Residency: University of Medicine and Dentistry of New Jersey (UMDNJ), Robert Wood Johnson Medical School, New Brunswick, NJ

Residency: University of Medicine and Dentistry of New Jersey (UMDNJ), Robert Wood Johnson Medical School, New Brunswick, NJ

Medical School: University of Medicine and Dentistry of New Jersey (UMDNJ), Robert Wood Johnson Medical School, New Brunswick, NJ

General Pediatrics *continued*



Tejal Mehta, MD
General Pediatrics

732-745-8519
123 How Lane
New Brunswick, NJ 08901

Residency: Woodhull Medical Center, Brooklyn, NY
Medical School: Grant Medical College, University of Mumbai, Maharashtra, India



Gladibel Medina, MD
General Pediatrics
Child Abuse Pediatrics

732-745-8519
123 How Lane
New Brunswick, NJ 08901

Residency: University of Medicine and Dentistry of New Jersey (UMDNJ), Robert Wood Johnson Medical School, New Brunswick, NJ
Medical School: University of Medicine and Dentistry of New Jersey (UMDNJ), Robert Wood Johnson Medical School, Piscataway, NJ



Frances Pelliccia, MD
General Pediatrics

732-745-8519
123 How Lane
New Brunswick, NJ 08901

Residency: University of Medicine and Dentistry of New Jersey (UMDNJ), Newark, NJ
Medical School: University of Medicine and Dentistry of New Jersey (UMDNJ), Newark, NJ



Paulina Rojas, MD
General Pediatrics

732-745-8519
123 How Lane
New Brunswick, NJ 08901

Residency: Louisiana State University, New Orleans, LA
Medical School: University of Chile, Santiago, Chile



Pediatric Genetics

Genetic consultation is performed by a medical geneticist and is designed to assist in determining a diagnosis in complex cases and developing an appropriate management and treatment plan. The Department of Medical Genetics and Genomic Medicine provides evaluation, diagnosis, management, and treatment of patients of all ages with conditions that are genetically influenced, including birth defects, chromosome abnormalities, cancer, and metabolic diseases.



Debra-Lynn Day-Salvatore, MD, PhD

Chair, Department of Medical Genetics and Genomic Medicine

732-745-6659

254 Easton Avenue
New Brunswick, NJ 08901

Fellowship: University of Medicine and Dentistry of New Jersey (UMDNJ), Robert Wood Johnson Medical School, Medical Genetics, New Brunswick, NJ

Residency: Cleveland Clinic Foundation (Pediatric and Adolescent Medicine), Cleveland, OH

Medical School: Case Western Reserve School of Medicine, Cleveland, OH

Postgraduate: New York University (Pharmacogenetics), New York, NY



Samantha Leib, MD

Medical Genetics and Genomic Medicine

732-745-6659

254 Easton Avenue
New Brunswick, NJ 08901

Residency: University of Medicine and Dentistry of New Jersey (UMDNJ), Robert Wood Johnson Medical School, New Brunswick, NJ

Medical School: University of Medicine and Dentistry of New Jersey (UMDNJ), Robert Wood Johnson Medical School, New Brunswick, NJ

Pediatric Hematology/Oncology



The Division of Pediatric Hematology/Oncology provides diagnosis and treatment to infants, children, adolescents and young adults with cancer and disorders of the blood, including sickle cell anemia, thalassemia, anemia, and bleeding disorders. The Division also offers a Multidisciplinary Vascular clinic for treatment of hemangiomas, other vascular tumors, and vascular malformations. As a full-member institution of the Children's Oncology Group, our specialists participate in the latest research, and provide cutting edge treatment of childhood cancers in collaboration with specialists from all over the world. The most current therapy is offered providing the best chance for cure. The New Visions Support Group provides peer-to-peer support for children, teens and young adults with cancer and other life-threatening diseases.



Nibal Zaghoul, MD
*Chief, Division of
Pediatric Hematology/
Oncology*

732-745-6674
254 Easton Avenue
New Brunswick, NJ 08901

Fellowship: New York Presbyterian Morgan Stanley Children's Hospital, New York, NY

Residency: St. Joseph's Children's Hospital, Paterson, NJ

Medical School: American University of Beirut - School of Medicine, Beirut, Lebanon



Anna Sechser-Perl, MD
*Pediatric Hematology/
Oncology*

732-745-6674
254 Easton Avenue
New Brunswick, NJ 08901

Fellowship: Children's Hospital of Philadelphia, Philadelphia, PA

Residency: Miami Children's Hospital, Miami, FL

Medical School: University of Zurich, Zurich, Switzerland



Lara Pappas, MD
*Pediatric Hematology/
Oncology*

732-745-6674
254 Easton Avenue
New Brunswick, NJ 08901

Fellowship: Memorial Sloan-Kettering Cancer Center and New York Presbyterian Hospital, New York, NY

Residency: University of California Irvine, Orange, CA

Medical School: Eastern Virginia Medical School, Norfolk, VA



Pediatric Hematology/Oncology

continued



Karen Kestenbaum, APN

*Division of Pediatric
Hematology/Oncology*

732-745-6674

254 Easton Avenue
New Brunswick, NJ 08901

Post Master's Certificate Pediatric NP, Rutgers University,
College of Nursing, Newark, NJ

Master of Science: New York University, College of Nursing,
New York, NY

Bachelor of Science: Rutgers University, College of Nursing,
Newark, NJ

Pediatric Immunology and Allergy



The Division of Immunology and Allergy provides comprehensive evaluation and treatment for children with allergic and immune disorders, including common allergy-related problems, such as food and pet allergies, eczema and asthma, as well as more complex and rare immunodeficiencies, such as severe combined immunodeficiency. Our Division also serves as consulting immunologists for any babies found with abnormalities by newborn Severe Combined Immuno-Deficiency (SCID) screening. Physicians also evaluate and treat patients with various allergic, rheumatologic, and immunologic disorders of childhood including pediatric asthma, atopic dermatitis (eczema), hives, hay fever, anaphylaxis, stinging insect allergy, immunodeficiency, recurrent infection, chronic cough, and illnesses which may complicate chronic allergic disease such as chronic sinusitis.



Harumi Jyonouchi, MD
*Pediatric
Immunology and Allergy*

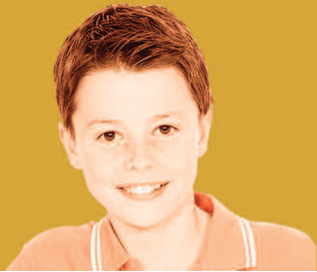
732-339-7780

254 Easton Avenue
New Brunswick, NJ 08901

Fellowship: University of South Florida, All Children's Hospital, St. Petersburg, FL

Residency: University of South Florida, All Children's Hospital, St. Petersburg, FL

Medical School: Yokohama City University, School of Medicine, Yokohama, Japan



Pediatric Infectious Diseases

The Division of Pediatric Infectious Diseases offers a variety of comprehensive care to children with infectious diseases. The pediatric specialists in the Division assist in the diagnosis and management of children with a number of known or suspected infections as well as immune deficiencies. Children are commonly referred for outpatient evaluation of recurrent or prolonged infections, persistent fever, suspected immune deficiency, enlarged lymph nodes, Lyme disease, tuberculosis, pneumonia, and a wide range of childhood infections. Children with meningitis, encephalitis, bone infection, endocarditis, and a spectrum of serious or difficult-to-treat infections are usually evaluated by these specialists as inpatients in The Children's Hospital.



Kristina Feja, MD, MPH
Chief, Division of Pediatric Infectious Diseases

732-339-7841

254 Easton Avenue
New Brunswick, NJ 08901

Fellowship: Columbia University/New York Presbyterian Hospital, New York, NY

Residency: Metrohealth Medical Center, Case Western Reserve University, Cleveland, OH

Medical School: Semmelweis University School of Medicine, Budapest, Hungary



Sabah Kalyoussef, DO
Pediatric Infectious Diseases

732-339-7841

254 Easton Avenue
New Brunswick, NJ 08901

Fellowship: The Children's Hospital at Montefiore, Bronx, NY

Residency: Saint Peter's University Hospital, New Brunswick, NJ

Medical School: Rowan University (formerly known as University of Medicine and Dentistry of New Jersey (UMDNJ)), School of Osteopathic Medicine, Stratford, NJ



Peter Wenger, MD
Pediatric Infectious Diseases

732-339-7841

254 Easton Avenue
New Brunswick, NJ 08901

Fellowship: University of Medicine and Dentistry of New Jersey (UMDNJ), New Jersey Medical School, Newark, NJ – Epidemic Intelligence Service Centers for Disease Control and Prevention (CDC) Hospital Infection Program

Residency: Case Western Reserve University, Rainbow Babies and Children's Hospital, Cleveland, OH

Medical School: University of Medicine and Dentistry of New Jersey (UMDNJ) - New Jersey Medical School, Newark, NJ

Inpatient Pediatric Medicine



The Division of Inpatient Pediatric Medicine was designed to provide specialized pediatric care in the inpatient setting. At The Children's Hospital, our board certified pediatric hospitalists are dedicated to caring for hospitalized infants, children and adolescents. To ensure the optimal level of care for medically complex patients referred by their primary care physicians, many patients are assigned to the Division of Inpatient Pediatric Medicine. The inpatient specialists work closely with an array of medical and surgical sub-specialists throughout The Children's Hospital. They are also in close communication with the referring physician and ensure that they receive a detailed discharge summary.



Sabah Kalyoussef, DO
Inpatient Pediatric Medicine

732-289-5580

254 Easton Avenue
New Brunswick, NJ 08901

Fellowship: The Children's Hospital at Montefiore (Infectious Diseases), Bronx, NY

Residency: Saint Peter's University Hospital, New Brunswick, NJ

Medical School: Rowan University (formerly known as University of Medicine and Dentistry of New Jersey (UMDNJ)), School of Osteopathic Medicine, Stratford, NJ



**Harsohena Kaur, MD,
MBBS, MPH**
Inpatient Pediatric Medicine

732-289-5580

254 Easton Avenue
New Brunswick, NJ 08901

Residency: Emory University School of Medicine, Atlanta, GA

Medical School: Christian Medical College, Ludhiana, Punjab, India



Meenakshi Khosla, MD
Inpatient Pediatric Medicine

732-289-5580

254 Easton Avenue
New Brunswick, NJ 08901

Residency: Metropolitan Hospital, New York Medical College, New York

Medical School: LTM Medical College, Sion, Mumbai, India



Neonatology

The Level III Neonatal Intensive Care Unit (NICU) at The Children's Hospital at Saint Peter's University Hospital is part of New Jersey's first state-designated Regional Perinatal Center. Licensed for 54 bassinets, our NICU is staffed around the clock with highly trained neonatologists, neonatal nurses and nurse practitioners, neonatal respiratory therapists, a neonatal-trained pharmacist and social worker. A variety of specialty services including genetic testing, ultrasound, physical therapy, and developmental assessment are also available. Despite the high-tech treatment used in our NICU, Saint Peter's understands the importance of the love and attention only parents can give their baby. NICU parents may visit their baby at any time of the day or night and can call whenever they have questions or concerns. In addition, our NICU is fully equipped with cameras that offer parents a secure online portal to view their infant from anywhere at any time.



Mark Hiatt, MD

Chief, Division of Neonatology

732-745-8523

254 Easton Avenue
New Brunswick, NJ 08901

Fellowship: Babies Hospital, Columbia University College of Physicians and Surgeons, New York Presbyterian Hospital, New York, NY

Residency: Cornell Medical Center, New York, NY

Medical School: Cornell University Medical College, New York, NY



Mujahid Anwar, MD

Neonatologist

732-745-8523

254 Easton Avenue
New Brunswick, NJ 08901

Fellowship: Newark Beth Israel Medical Center, Newark, NJ

Residency: New York Infirmary, New York, NY

Medical School: Nishtar Medical College, Multan, Pakistan



Shakuntala N. Chandra, MD

Neonatologist

732-745-8523

254 Easton Avenue
New Brunswick, NJ 08901

Fellowship: University of Medicine and Dentistry of New Jersey (UMDNJ), New Brunswick, NJ

Residency: Long Island College Hospital, Brooklyn, NY

Medical School: Bangalore Medical College, Karnataka, India

Neonatology *continued*



Manne Murali, MD

Neonatologist

732-745-8523

254 Easton Avenue
New Brunswick, NJ 08901

Fellowship: University of Medicine and Dentistry of New Jersey (UMDNJ), New Brunswick, NJ

Residency: University of Medicine and Dentistry of New Jersey (UMDNJ), New Brunswick, NJ

Medical School: University of Madras, Madras, India



Sharadha Polam, MD

Neonatologist

732-745-8523

254 Easton Avenue
New Brunswick, NJ 08901

Fellowship: University of Medicine and Dentistry of New Jersey (UMDNJ), Robert Wood Johnson University Hospital, New Brunswick, NJ

Residency: St. Vincent's Catholic Medical Center, Staten Island, NY

Medical School: Sri Ramachandra Medical University, Tamil Nadu, India



Pediatric Nephrology

The Division of Pediatric Nephrology is a major referral service for infants and children with renal (kidneys) diseases, hypertension, and disorders of fluids and electrolytes. Management and treatment of patients on hemodialysis and peritoneal dialysis are part of an integral program designed to meet all the patient's needs.



Anup Singh, MD
*Chief, Division of
Pediatric Nephrology*

732-565-5489
254 Easton Avenue
New Brunswick, NJ 08901

Fellowship: State University of New York Downstate, Brooklyn, NY
Residency: State University of New York Downstate, Brooklyn, NY
Medical School: De La Salle University, Manila, Philippines

Pediatric Neurology



The Division of Pediatric Neurology is dedicated to offering the highest level of care to children and families afflicted by disorders of the nervous system and using both technology and compassion to treat children with severely disabling illnesses. Our pediatric neurologists care for children with a wide range of disorders including children with inborn errors of metabolism that involve the nervous system. The Pediatric Neurology Division utilizes sophisticated diagnostic techniques, including video-encephalography (EEG) monitoring, to help evaluate children with seizure disorders, epileptic and non-epileptic seizures. Some children benefit from surgery, which is guided by sophisticated brain mapping techniques. In all cases, therapy is tailored to the individual child, and options may include the full range of anti-epileptic medications, the ketogenic diet and vagus nerve stimulation. The Division is a referral program for area neurologists for the treatment of intractable seizures. Neurologists also investigate and manage cerebral palsy, developmental delay, movement disorders, chronic headache and autistic spectrum disorders.



Carlos Lastra, MD

*Chief, Division of
Pediatric Neurology*

732-339-7870

254 Easton Avenue
New Brunswick, NJ 08901

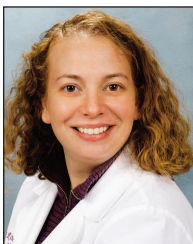
Fellowship: University of Medicine and Dentistry of New Jersey (UMDNJ) (Neurophysiology), Newark, NJ

Fellowship: University of Medicine and Dentistry of New Jersey (UMDNJ) (Pediatric Neurology), Newark, NJ

Chief Residency: Monmouth Medical Center, Long Branch, NJ

Residency: Monmouth Medical Center, Long Branch, NJ

Medical School: Pontificia Universidad Javeriana Facultad de Medicina, Bogota, Colombia



Sara Rose Haim, MD

Pediatric Neurology

732-339-7870

254 Easton Avenue
New Brunswick, NJ 08901

Fellowship: Wake Forest School of Medicine, Winston Salem, North Carolina (Epilepsy)

Residency: Boston Medical Center, Boston, MA (Neurology)

Medical School: Ben Gurion University of the Negev, Medical School for Internal Health, Beer Sheva, Israel



Chandrabhaga Miskin, MD

Pediatric Neurology

732-339-7870

254 Easton Avenue
New Brunswick, NJ 08901

Fellowship: Nicklaus Children's Hospital, Miami Children's Healthcare System, Miami, FL

Fellowship: St. Christopher's Hospital for Children, Drexel University College of Medicine, Philadelphia, PA

Residency: Saint Peter's University Hospital, New Brunswick, NJ

Medical School: American University of Antigua, Antigua, West Indies



Pediatric Neurology *continued*



Victoria Surgan, MD
Pediatric Neurology

732-339-7870
254 Easton Avenue
New Brunswick, NJ 08901

Fellowship: JFK Medical Center (Clinical Neurophysiology), Edison, NJ
Fellowship: Schneider Children's Hospital North Shore-Long Island Jewish Hospital (Pediatric Neurology), New Hyde Park, NY
Special Qualifications: Botox and EMG
Residency: Schneider Children's Hospital North Shore-Long Island Jewish Hospital (Pediatrics), New Hyde Park, NY
Medical School: University of Medicine and Dentistry of New Jersey (UMDNJ), Newark, NJ



Anu Venkat, MD
Pediatric Neurology

732-339-7870
254 Easton Avenue
New Brunswick, NJ 08901

Fellowship: The Children's Hospital of Philadelphia, Perelman School of Medicine (Epilepsy and Clinical Neurophysiology), Philadelphia, PA
Residency: University of Medicine and Dentistry of New Jersey (UMDNJ) (Pediatrics, Neurology), Newark, NJ
Medical School: Coimbatore Medical College, Coimbatore, Tamil Nadu, India



**Adrienne Valdez, MSN,
RN-CCRN, NP-C**
Pediatric Neurology

732-339-7870
254 Easton Avenue
New Brunswick, NJ 08901

Master of Science in Nursing: University of Medicine & Dentistry of New Jersey, Newark, NJ
Bachelor of Science in Nursing: Seton Hall University, South Orange, NJ

Pediatric Pathology



The Department of Laboratory Medicine and Pathology, provides clinical diagnostic support and consultation services through a comprehensive array of examinations. The services of the Department of Laboratory Medicine and Pathology are available 24 hours a day, 365 days per year. Staff pathologists are on-call continuously for urgent requests and intraoperative diagnoses.



Susan Shen-Schwarz, MD
*Chief, Perinatal and
Pediatric Pathology*

732-745-8534

254 Easton Avenue
New Brunswick, NJ 08901

Fellowship: Children's Hospital of Los Angeles (Clinical Pathology),
Los Angeles, CA

Fellowship: The Hospital for Sick Children (Anatomical Pathology),
Toronto, Canada

Residency: Children's Hospital of Pittsburgh – University of Pittsburgh,
Pittsburgh, PA

Medical School: University of Hong Kong, Hong Kong, China



Pediatric Pulmonology

The Pediatric Pulmonology Division specializes in the treatment of infants, children, and adolescents with breathing and respiratory disorders such as asthma, airway problems, and other pulmonary diseases including cystic fibrosis. The Children's Hospital is equipped with clinical laboratories with special facilities for sweat testing, pulmonary function testing and pediatric sleep studies.



Archana Singh, MD
*Chief, Division of Pediatric
Pulmonology*

732-565-5467

254 Easton Avenue
New Brunswick, NJ 08901

Fellowship: Winthrop University Hospital, Mineola, Long Island, NY

Residency: Infants and Children's Hospital, Maimonides Medical Center, Brooklyn, NY

Medical School: Ganesh Shankar Vidyarthi Memorial Medical College, Kanpur, Uttar Pradesh, India

Pediatric Sports Medicine Concussion Program



At The Children's Hospital, we provide comprehensive medical evaluations and treatment for children and young adults who have concussions caused by sports, accidents or falls. We provide expertise on sprains, overuse injuries, strains, dislocations, ligament injuries and many other sports-related injuries. Additionally, our Pediatric Concussion Program has a wide range of pediatric subspecialties available including sports medicine, social work and neurology. Neurological and diagnostic tools, including computerized cognitive testing, physical and/or occupational therapy assessment and other diagnostic tools such as MRI, are all available.



Arlene Goodman, MD
*Director of Concussion
Program
Pediatric Sports Medicine*

732-565-5455

562 Easton Avenue
Somerset, NJ 08873

Fellowship: Cincinnati Children's Hospital Medical Center Primary Care Sports Medicine, Cincinnati, OH

Residency: Connecticut Children's Medical Center, Hartford, CT

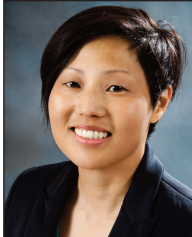
Medical School: Wake Forest University School of Medicine, Winston Salem, NC



Pediatric Orthopedics

The Pediatric Orthopedics Division is a comprehensive program focused on the evaluation and treatment of musculoskeletal (bone, joint, or muscle) conditions in children. It offers a continuum of care that includes newborns, babies, toddlers, teenagers and young adults. The pediatric orthopedist focuses upon the child's musculoskeletal development, as children are faced with different problems compared to adults, since children are growing and developing, and their body's response to injuries, infections, and deformities are very different from those of an adult.

Our integrative program treats children with complex pediatric problems, and each child's care is managed by a team of medical and surgical professionals who are uniquely trained in caring for children with musculoskeletal conditions, such as limb and spine deformities noted either in utero, at birth or later in life (clubfoot, scoliosis, limb length differences), gait abnormalities (limping), fractures, bone or joint infections and tumors. The Children's Hospital pediatric orthopedic surgeons are fellowship trained, provide a wide range of treatment options, and possess great expertise in dealing with children and treating their musculoskeletal conditions.



Amie Kawashima, DO
*Pediatric Orthopedic
Surgery*

732-339-7566

254 Easton Avenue
New Brunswick, NJ 08901

Fellowship: Shriners Hospitals for Children and St. Christopher's Hospital, Philadelphia, PA

Residency: Philadelphia College of Osteopathic Medicine Affiliated Hospitals, Philadelphia, PA

Medical School: Touro University Nevada, College of Osteopathic Medicine, Henderson, NV



Alexandra Kondratyeva, DO
*Pediatric Orthopedic
Surgery*

732-339-7566

254 Easton Avenue
New Brunswick, NJ 08901

Fellowship: Columbia University Medical Center, New York Presbyterian Morgan Stanley Children's Hospital, New York, NY

Residency: North Shore Long Island Jewish Plainview Hospital, New York, NY

Medical School: New York College of Osteopathic Medicine, New York, NY

Pediatric Surgery



The Children's Hospital at Saint Peter's provides a wide array of pediatric surgical services including general surgery, ear, nose and throat surgery (ENT or otolaryngology), gastrointestinal surgery, ophthalmology, urology, orthopaedics, plastic surgery and neurosurgery. The pediatric surgeons utilize advanced surgical equipment and tiny video cameras to perform major procedures with just a few small incisions. These minimally invasive surgical techniques and technologies decrease healing time, helping kids get back to being kids as soon as possible.



John Gallucci, MD
Chief, Pediatric Surgery

732-565-5482
254 Easton Avenue
New Brunswick, NJ 08901

Fellowship: McGill University, Montreal, Canada
Residency: Cooper Hospital University Medical Center, Camden, NJ
Medical School: University of Medicine and Dentistry of New Jersey (UMDNJ) – Robert Wood Johnson Medical School, New Brunswick, NJ

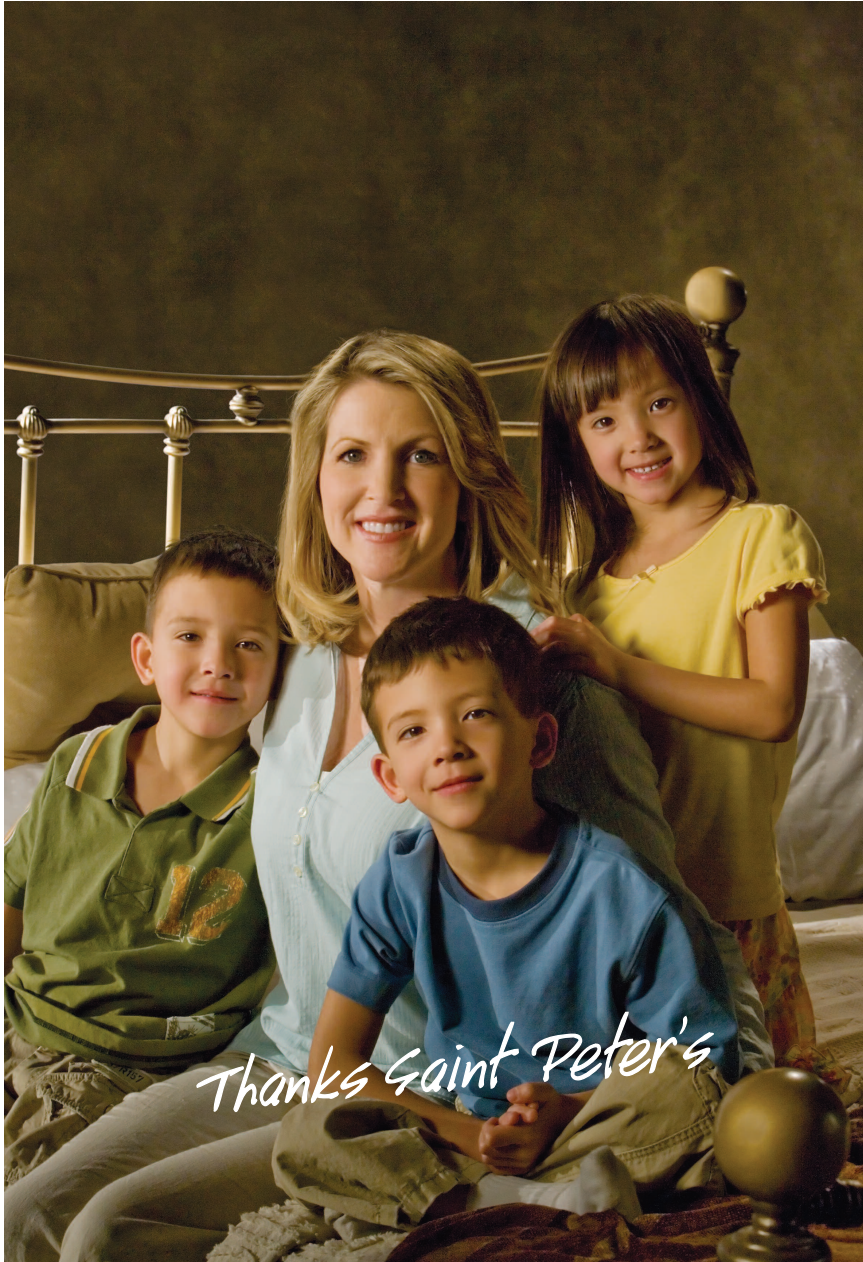


Anthony Georges, MD
Pediatric Surgery

732-565-5482
254 Easton Avenue
New Brunswick, NJ 08901

Fellowship: Miami Children's Hospital, Miami, FL
Residency: SUNY Downstate Medical Center, Brooklyn, NY
Medical School: New York Medical College, Valhalla, NY

Centers of Excellence



Craniofacial & Neurosurgical Center



T: 732-745-7943

F: 732-745-1768

254 Easton Avenue, New Brunswick, NJ 08901

The Cleft Palate-Craniofacial Center was founded in 1959 to provide families with the much needed medical knowledge, technology and support which are so necessary for a child with clefting or other craniofacial differences. Our team focuses exclusively on the special needs and concerns of these families.

We pride ourselves in providing ongoing clinical correspondence to the child's primary care physician. We believe strongly that the child's primary care physician is an integral part of our team.

Our program is recognized by the American Cleft Palate-Craniofacial Association (ACPA) as a regional center providing all of the services necessary for the treatment of clefts and other craniofacial disorders.

**Medical Director
Bipin Patel, MD**

**Coordinator
Joan Rubin, BS, RN**

**Audiology
Katharine Buckley, Au.D, CCC-A**

**Craniofacial/Plastic Surgery
Naveen Ahuja, MD
Frank Ciminello, MD
Adam Feintisch, MD
Kevin Nini, MD
Robert Olson, MD**

**Developmental Pediatrics
Rose Mary Merola, MD**

**Medical Genetics and Genomic Medicine
Debra Day-Salvatore, MD, PhD**

**Ophthalmology
J. Mark Engel, MD**

**Oral/Maxillofacial Surgery
Nilesh R. Patel, DMD, MD
Shahid R. Aziz, DMD, MD
Anayo Adachi, DMD, MD**

**Orthodontics
Matthew Choi, DMD
Padma Mukherjee, DMD, PhD**

**Otolaryngology (ENT)
Bruce Edelman, MD
Jay Horowitz, MD
Kenneth Kaplan, MD**

**Pediatric Dentistry
Martin Halofsky, DDS
Jason Nudelman, DDS**

**Pediatric Neurology
Carlos Lastra, MD
Victoria Sorgan, MD
Sara Haim, MD
Anu Venkat, MD
Chandrabhaga Miskin, MD**

**Pediatric Neurosurgery
Mostafa El Khashab, MD, PhD
Arno Fried, MD, PhD
Allison Rathmann, DO**

**Pediatrics
Michael Lucas, MD**

**Radiology
Carol Sarokhan, MD**

**Social Work
Helene Knee, MSW, LCSW**

**Speech Language Pathology
Sheryl Gluck, MA, CCC-SLP
Cecilia J. Manno, MS, CCC-SLP**



Dorothy B. Hersh Child Protection Center

T: 732-448-1000

F: 732-745-2344

123 How Lane, New Brunswick, NJ 08901

The Dorothy B. Hersh Regional Diagnostic Treatment Center is staffed by child abuse pediatricians, pediatricians, nurse practitioners, psychologists, social workers and nursing staff with specialty training and/or experience in child abuse/neglect. The Center utilizes a wide range of pediatrics specialists including but not limited to: pediatric radiology, pediatric endocrinology, genetics, pediatric hematology, and pediatric neurology, all providing consultations as necessary. All professional disciplines work collaboratively within the framework of a multidisciplinary approach to provide timely and effective evaluations and interventions in child abuse or neglect cases. The Center has established working relationships with the Division of Child Protection and Permanency local offices, prosecutors' offices, as well as many local mental health providers, pediatricians, schools and police departments located with the seven counties that comprise the central region of the state. The Center works to provide a timely response to reports of suspected child abuse and/or neglect.



Gladibel Medina, MD

*Board Certified Child Abuse
Pediatrician
Medical Director*



Michelle Zuckerman, PsyD

*Licensed Psychologist
Mental Health Director*



Julia Debellis, MD

*Board Certified Child Abuse
Pediatrician*



Karen Babcock, MD

Physician, General Pediatrics

Brett Biller, PsyD

Psychology Student Intern Coordinator

Lynne Einhorn, LCSW

Social Work Student Coordinator

Kanika Fuller, RN

Manager, Pediatric Call Center (CHEC)

PSYCHOLOGISTS:

Amy Kavanaugh, PhD

Sarah Seung-McFarland, PhD

Karen Owen, PsyD

Nancy Coba, PsyD

SOCIAL WORKERS:

Susan Miller, LCSW

Hilary Fineman, LCSW

Kimberly Stolow, LCSW

Leisa Walker, LSW

Amanda Uhrig, LCSW

Lea Steinman, LSW

NURSING:

Felicia Greulich, APN

Teresa Melendez, RN



For KEEPS
 (For Kids Embraced and Empowered
 through Psychological Services)
Acute Behavioral Program

T: 732-565-5494

F: 732-846-5478

123 How Lane, New Brunswick, NJ 08901

The mission of For KEEPS is to provide high quality mental health diagnoses and intensive treatment to children who suffer from emotional and behavioral difficulties that impede their ability to function successfully in a social environment. For KEEPS is an acute partial hospitalization center for children between the ages of 5-17 years old who do not require 24-hour inpatient care, but who cannot be managed by outpatient care alone. Therapeutic services for adolescents are provided apart from services for younger children. The center provides individual and group therapy, family therapy, academic instruction in collaboration with the child's school district, medication management, discharge planning, and referral services and transportation for eligible children.



Laura Rodriguez-Frank, MD

*Child Psychiatry
 Medical Director*



Sara Calvert, MD

Child Psychiatry

Alicia Adams, LCSW

Program Manager

Christopher Farrell, BA

Assistant Manager

THERAPISTS:

Talya Bauer, LPC

Nicolina Gassaway, LSW

Carrine Neves, LCSW

Samantha Saks, LSW

Jessica Villanueva, LPC

NURSING:

Luna Black, BSN, RN-BC

Peter Inocencio, BSN, RN-BC



The Center for Sleep and Breathing Disorders

T: 732.937.6055

F: 732.545.4476

254 Easton Avenue, New Brunswick, NJ 08901

The Center for Sleep and Breathing Disorders at Saint Peter's University Hospital is fully accredited as a sleep disorders center by the American Academy of Sleep Medicine, recognized as one of the most important national organizations ensuring that a sleep center provider meets or exceeds the standards of sleep medicine. Our exceptional expertise and high standards ensure that children receive the most comprehensive evaluation, diagnosis and treatment of sleep disorders. Poor concentration, depression, irritability, asthma and allergies, and poor physical health can be the results of poor sleep habits. We offer comprehensive care for children and offer overnight and daytime sleep studies.



Samuel Knee, MD
General Pediatrics

732-745-8519
123 How Lane
New Brunswick, NJ 08901

Fellowship: Stony Brook University Hospital, Stony Brook, NY (Sleep Medicine)

Residency: Jacobi Medical Center at the Albert Einstein College of Medicine, Bronx, NY(UMDNJ), Robert Wood Johnson Medical School, New Brunswick, NJ

Medical School: Sackler School of Medicine, New York State Program, Tel Aviv, Israel

Ashgan Elshinawy, MD
Medical Director/Sleep Specialist

Colleen Mc Gowan, MHA/GER, RCP
*Manager
Respiratory Care Department*



Community Collaborating Physicians

ALLERGY/IMMUNOLOGY

Sonia Guirguis, MD	(732) 613-6161
Hemant Kesarwala, MD	(732) 821-0595
Donald N. Leibner, MD	(732) 390-4900
Gary Zuckerman, MD	(732) 821-0595

ORAL MAXILLOFACIAL SURGERY

Shahid R. Aziz, DMD, MD	(732) 235-5050
Anayo Adachi, DMD, MD	(732) 235-5050

OTOLARYNGOLOGY

David F. Ahmadi, MD	(732) 828-6404
Andrew E. Azer, MD	(732) 549-3934
Bruce A. Edelman, MD	(732) 238-0300
Charles Highstein, MD	(732) 613-0600
Jay B. Horowitz, MD	(732) 613-0600
Kenneth A. Kaplan, MD	(732) 613-0600
Ferne Lavine, MD	(732) 246-2001
Vishvesh M. Mehta, MD	(732) 549-3934
Rakesh Patel, MD	(732) 220-1100
Nishant Reddy, MD	(732) 220-1100
Steven L. Sabin, MD	(732) 873-6863

PEDIATRIC ANESTHESIOLOGY

Daniela Cean, DO	(732) 271-1400
Jieun Choi, MD	(732) 271-1400
Sanford Ginsberg, MD	(732) 271-1400
Warren Land, DO	(732) 271-1400
Ajay Nath, MD	(732) 271-1400
Scott Siegel, MD	(732) 271-1400
James Sperrazza, MD	(732) 271-1400
Assumpta Yau, MD	(732) 271-1400

PEDIATRIC DENTISTRY

Jenna M. Barry, DMD	(732) 238-5100
Martin Halofsky, DDS	(732) 249-1010
Jason Nudelman, DDS	(732) 238-5100

Community Collaborating Physicians

continued

PEDIATRIC GASTROENTEROLOGY

Jay Dadhania, MD (732) 246-4727

PEDIATRIC NEUROSURGERY

Mostafa El Khashab, MD (201) 457-0044

Arno H. Fried, MD (201) 457-0044

Vivek Ramakrishnan, DO (201) 457-0044

Allison Rathmann, DO (201) 457-0044

PEDIATRIC OPHTHALMOLOGY

J. Mark Engel, MD (732) 613-9191

Sepideh Roustta, MD (732) 613-9191

Nancy Sun, MD (732) 613-9191

Barry Wasserman, MD (609) 775-9758

PLASTIC SURGERY

Naveen Ahuja, MD (732) 418-0709

Frank S. Ciminello, MD (201) 289-5551

Matthew A. Clott, MD (908) 222-0070

Adam H. Hamawy, MD (609) 301-0760

Robert Herbstman, MD (732) 254-1919

Matthew R. Kaufman, MD (732) 741-0970

Kevin T. Nini, MD (732) 418-0709

Robert Olson, MD (732) 418-1888

Michael S. Risin, MD (732) 933-8788

Lisa F. Schneider, MD (732) 741-0970

Philip Wey, MD (732) 418-0709

Eric G. Wimmers, MD (732) 741-0970

RADIOLOGY

Mitchell Simon, MD (732) 390-0040

Sharon Underberg-Davis, MD (732) 390-0040

David M. Walor, MD (732) 390-0040

Stephanie Hanhan, MD (732) 390-0040

Vincent Lee, MD (732) 390-0040

UROLOGY

Michael H. Fleisher, MD (732) 613-9144

Thomas S. Vates, MD (732) 613-9144

The Children's Hospital Contact Numbers

The Children's Hospital-Main Number732.565.KIDS
732-565-5437

Admitting.....732-745-8540
Directions to The Children's Hospital732-745-8600, ext. 6535
Pediatric Emergency Department732-937-6009
Pediatric Transport Team.....888-491-3486

Inpatient Services

Child Life Program.....732-745-8600, ext. 7846
Neonatal Intensive Care Unit (NICU).....732-745-8600, ext. 8448/8450
Newborn Nursery.....732-745-8600, ext. 8444
Inpatient Pediatric Floor.....732-745-8600, ext. 8307/8308
Pediatric Intensive Care Unit (PICU)732-745-6684
Social Work/Discharge Planning732-745-8522
Family Health Center (Pediatrics)732-745-8519

Pediatric Specialty Services

Adolescent Medicine732-565-5487
Allergy/Immunology732-339-7780
Anesthesiology732-745-8600, ext. 7059
Audiology Services732-937-6026
Cardiology732-846-2855
CARES Surgicenter.....732-565-5400
Center for Sleep and Breathing Disorders732-937-6005
Craniofacial-Neurosurgical Center732-745-7943
Critical Care.....732-745-6684
Developmental Medicine732-339-7045
Dorothy B. Hersh Child Protection Center732-448-1000
Endocrinology/Diabetes.....732-745-8574

The Children's Hospital Contact Numbers

continued

For KEEPS Acute Behavioral Program	732-565-5494
Gastroenterology	732-339-7052
Hematology/Oncology.....	732-745-6674
Infectious Diseases.....	732-339-7841
Medical Genetics and Genomic Medicine.....	732-745-6659
Nephrology	732-565-5489
Neurology	732-339-7870
Nutrition.....	732-745-8600, ext. 8495
Orthopedics.....	732-339-7915
Pulmonology and Cystic Fibrosis	732-565-5467
Sleep Medicine	732-339-7910
Speech and Language Program.....	732-745-8501
Sports Medicine	732-565-5455
Surgery	732-565-5482

Support Groups

Craniofacial Social Skills Boys/Girls Group	732-745-8600, ext. 8113
Craniofacial Teen Boys/Girls Support Group	732-745-8600, ext. 8113
My Goal Autism Support Group.....	1-877-886-9462
New Visions Support Group	732-745-6674



Treating you better...for life.

**254 Easton Avenue
New Brunswick, NJ 08901
732.565.KIDS (5437) ■ saintpetershcs.com/spchildrenshospital**